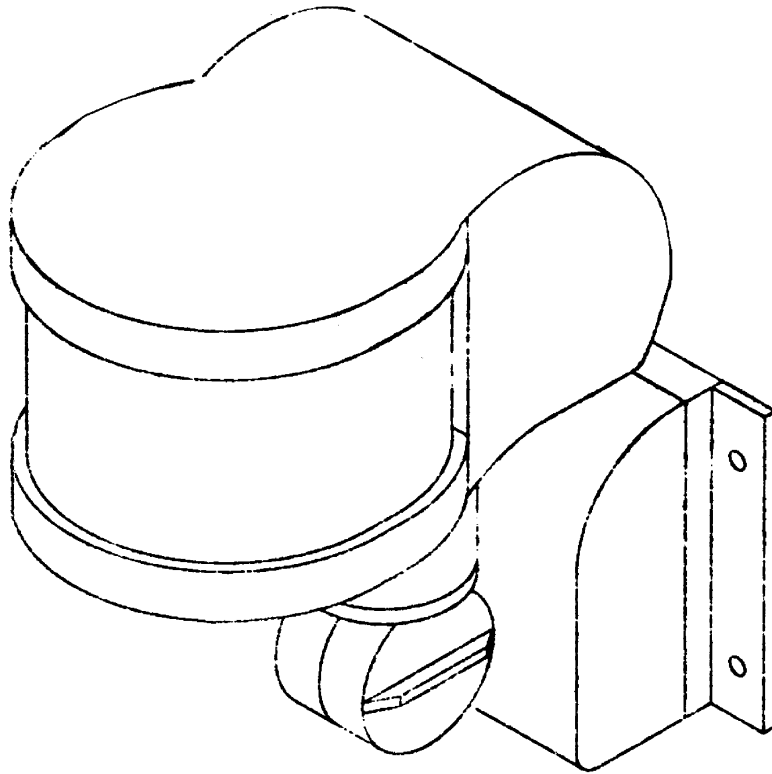


DPS48A

Infrared Motion Sensor



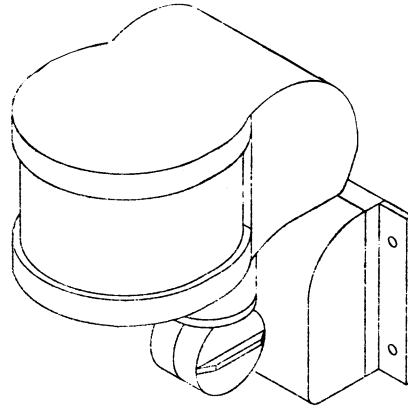
Instruction

DPS48A INFRARED SENSOR

INSTRUCTION

WELCOME TO USE DPS48A INFRARED SENSOR SWITCH!

This product is a new energy-saving lighting switch, which adopts two high sensitivity detectors, integrated circuit and SMT technology; it gathers automatism, convenience, safety and energy saving, etc. The wide detection is comprised by right and left service field; it utilizes body infrared rays as signal control source to start the load when human enters detection field; the sensor can identify day and night automatically. It is used widely and easy to install; it has the power and detection show functions.



Technology reference

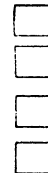
Power source: 220V/AC~240V/AC
110V/AC~240V/AC



Power frequency: 50~60Hz
Control light: <3LUX~sunshine light
Working time:min:8sec±3sec
Max:7min±2min
Detection range: 220degree
Detection distance:11m max(<24℃)
Installation height: 1.5m~2.5m

Related load:

1200W (220V/AC~240V/AC)
3000W(220V/AC~240V/AC)
800W (110V/AC~130V/AC))
1500W(110V/AC~130V/AC)



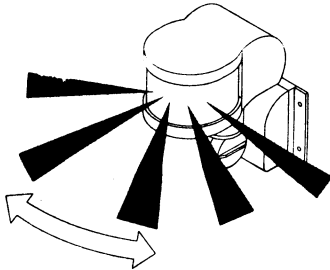
Working temperature:-20~40℃
Working humidity: <93%RH
Power consumption:0.45W(static 0.1W)
Detection moving speed:0.6~1.5m/s

Function

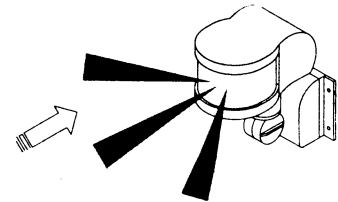
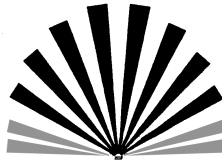
- ◇ The detection distance can be adjusted: The detection distance is short if you press down the switch, otherwise it is long;
- ◇ Can identify day and night automatically: The ambient light in which DPS48A works can be adjusted freely, when you turn it to the sunshine (largest), it can work day and night; If you turn it to moon (smallest) it only can work in the light below 3LUX. Please refer to the testing way about the adjustment
- ◇ Power and detection indication: The indicator lamp flash one time each 4sec after switching on the power, it can flash 2 times each 1sec after receiving the Induction signals. So it can show if the detector and power is normal;
- ◇ Time-delay added continually: When it receives the second induction signals after the first, it should compute time once more on the rest of the first time-delay basis.
- ◇ Time-delay adjustment: The working time-delay can be adjusted according to the

customer desire, the minimum time is $8\text{sec} \pm 3\text{sec}$, the maximum is $7\text{min} \pm 2\text{min}$.

- ◇ Locking function: during working, sensor will keep load lighting when power is shut off 2 seconds and then on. And shut off the power for 4 seconds and then on, sensor will resume automation.



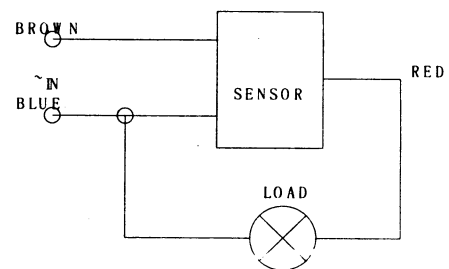
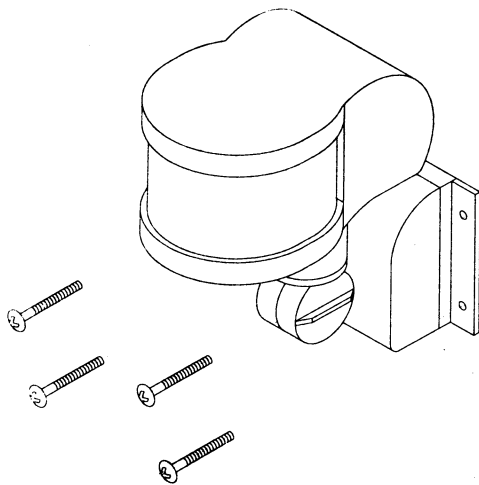
Correct moving orientation



incorrect moving orientation

Installation (see the following diagram)

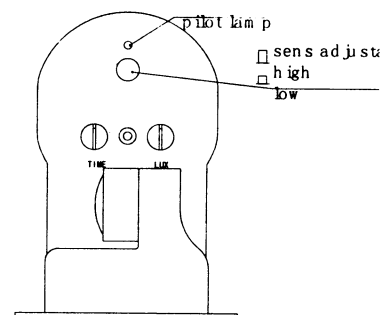
- △ Shut off the power;
- △ Twist open the screw on the base-lid, pull on the wiring hole, put the power and load wire into the base-lid;
- △ Fix the base-lid with the dilatibility screw on the selected installation position;
- △ Put the power and load wire into the sensor according to the indication diagram;
- △ Fix the sensor on the base-lid, twist the screw tightly then you could electrify it to test;



Connection-wire diagram

Test

- ◇ Turn the light control knob anti-clockwise to the largest; turn the time knob clockwise to smallest.
- ◇ Turn on the power, the controlled load should not work, and the indicator lamp flashes once every 4sec; the load would work within 5-10sec and the



indicator lamp flashes twice every second. If there are no induction signals, the load should stop working within 5~30sec, the indicator lamp should resume to flash 1 time each 4sec;

- ◇ Sense it again 5-10sec later after the load goes out, the load should work and the indicator lamp flash 2 times every 1sec, the load stops working within 5-15sec;
- ◇ Turn the LUX knob to the smallest anti-clockwise. If you test it in the ambient light beyond 3LUX, sense it, the load shouldn't work after the load stop working; if you cover the detecting lens with opaque object (towel etc), the load should work. Under the condition of no sense signals, it is normal for the load to stop working within 5-15sec.
- ◇ Attention: there must be 5sec interval between the second sense and the first sense when the load stop working, while there needn't be interval when it inducts continually during the load doesn't stop working.

Note:

- Electrician or experienced human can install it;
- The unrest objects can't be regarded as the installation basis-face;
- There is no hinder or unrest objects effecting detection in front of the detection window;
- Avoid installing it near temperature alteration zones, for example: Air condition, central heating etc;
- Please don't open the case for your safety if you find the hitch after installation.

SOME PROBLEM AND SOLVED WAY

- **The load doesn't work:**
 - a. Check the power and the load;
 - b. If the indicator lamp flash 1 time every 4sec;
 - c. If the load is good;
 - d. If the indicator lamp quicken to flash after sense.
 - e. Please check if the working light you set corresponds with the ambient light
- **The sensitivity is poor:**
 - a. Please check if there is any hinder in front of the detection window that effect to receive the signals;
 - b. Please check the ambient temperature;
 - c. Please check if signal source is in the detection fields;
 - d. Please check the installation height
 - e. If the moving orientation is correct.
- **The sensor can't shut off the load automatically:**
 - a. If there is continual signal in the detection field;
 - b. If the time-delay is set to the longest;
 - c. If the power corresponds with the instruction required;
 - d. If the temperature change near the sensor, (air conditioner, central heating etc).
 - e. Check it if it is in locking conditions.