

HD-IPAC series

High-speed IP dome camera with Intelligent Auto-Tracking

The IPAC series Intelligent Auto-Tracking IP Dome Camera is a high-performance camera designed for professional video surveillance, offering the choice of either a wireless or a wired connection to the IP network. For demanding security surveillance and remote monitoring applications, the IPAC series Intelligent Auto-Tracking IP Dome Camera provides exceptional features such as Intelligent Auto-Tracking , relay-tracking, optical zoom including 18x , 26x or 30x, autofocus lens. Superb performance and image quality, and fast and precise pan/tilt mechanics. the IPAC series Intelligent Auto-Tracking IP Dome Camera deliver superior quality MPEG-4 video in all light conditions over IP networks. the IPAC series Intelligent Auto-Tracking IP Dome Camera

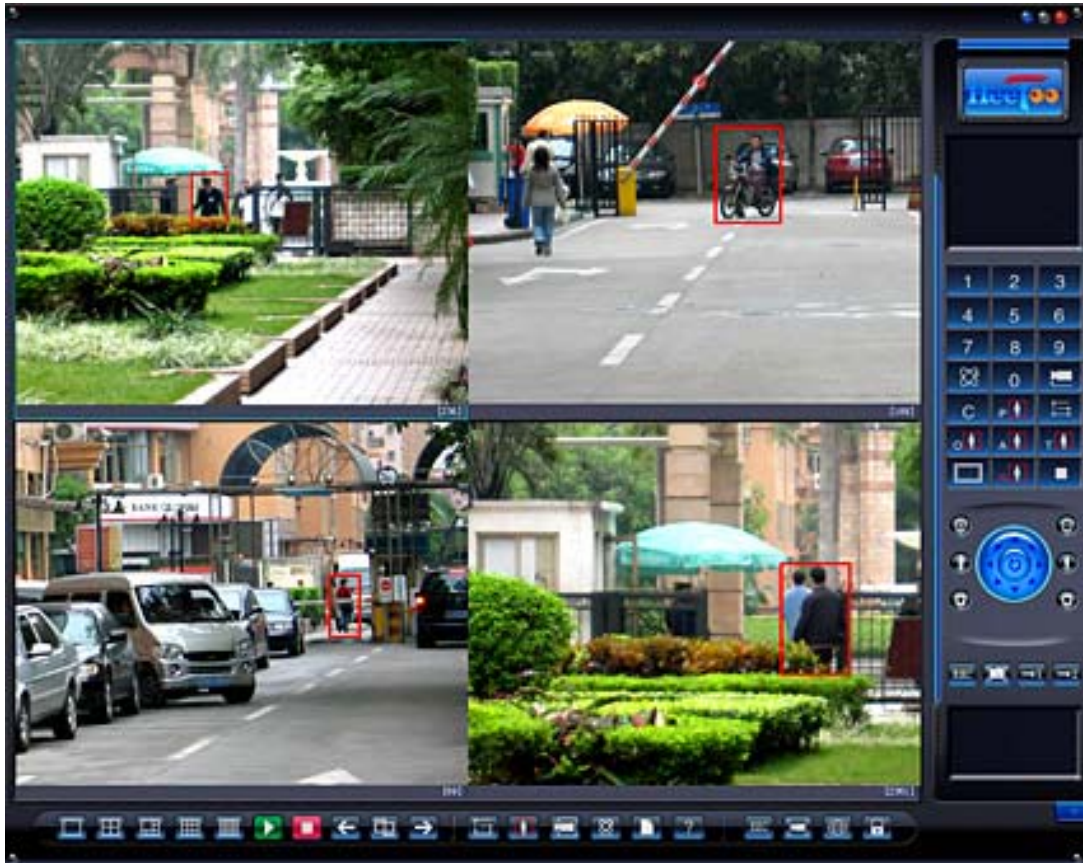
As with all true High-speed domes, the IPAC series Intelligent Auto-Tracking IP Dome Camera enable a continuous 360-degree pan operation and support 128 preset positions and guard tour. For demanding security surveillance and remote monitoring applications, fast, high precision PTZ control using Intelligent Auto-Tracking system makes it easy to track moving objects of dome monitoring conditions.



The IPAC series Intelligent Auto-Tracking IP Dome Camera can capture color video in light conditions, with its automatic or manually removable IR-cut filter, is able to capture black and white video in dark conditions.

The IPAC series Intelligent Auto-Tracking IP Dome Camera provides high performing wireless transmission with a wide coverage range according to the IEEE 802.11g standard, as well as backward compatibility with IEEE 802.11b. The omni-directional antenna, which is included in the IPAC series Intelligent Auto-Tracking IP Dome Camera shipment, is exchangeable for further flexibility

The IPAC series Intelligent Auto-Tracking IP Dome Camera is designed for use in demanding security surveillance such as airports, casinos, stadiums ,ports. ailway stations, prisons, warehouses, manufacturing facilities,shopping centers,school campuses and environmental monitoring etc.



Main features

Real-time monitor via Internet Explorer without extra software

High performance MPEG-4 hardware video compression and ADPCM audio compression

Resolutions including : D1 (720 x576) ,FIELD(720 x288),CIF(352 x288) ,QCIF(176 x144)

Full frame rate: up to 30/25 frames per second for all resolutions

High precision auto-tracking moving objects with combined Intelligent tracking surveillance software

Support realy-tracking

Auto recording or capturing when auto-tracking start

Free multi-channel Intelligent tracking surveillance software

Free multi-channel PC surveillance software

Support video and audio synchronous compression and playback

Support ADSL (PPPoE) dialup function

Support TCP, UTP, RTP, DHCP, DDNS, etc

Support variable bit rate and variable frame rate

5-channel alarm input, 2-channel control output

Support AVI, AVI record formats

Built in web server, supports IE monitoring, configuration and updating

Support multi-level user management

Remote control PTZ

Preset positions and Guard tour

Support position configurable OSD&LOGO

Support multi-zone motion detection

Support *IEEE 802.11b/g*

Technical specifications

AT-IPAC Intelligent Auto-Tracking IP Dome Camera

IP Dome Camera	Indoor dome	Outdoor dome	Indoor dome	Outdoor dome
Models	HDIPAC-0081	HDIPAC-0082	HDIPAC-00F691	HDIPAC-00CF692
Image Sensor	1/4" Sony EXview HAD CCD (Automatic day/night)			
Lens	F1.4-3.0, f=4.1 mm wide to 73.8 mm tele, autofocus Focus range: 35 mm (wide) or 800 mm (tele) to infinity			
Minimum illumination	Color: 0.7lux /F1.4 B/W: 0.01 Lux /F1.4			
Total pixels	440,000 pixels			
Horizontal Resolution	480TVL			
S/N Ratio	> 50dB			
White Balance (AWB)	AUTO			
AGC	Auto/Manual			
Shutter time	1 sec to 1/10.000 sec			
PTZ control	128 preset positions, Guard tour, Supports Windows compatible joysticks			
Zoom	18x optical, 12x digital			
Pan range	360° endless			
Tilt range	0° - 90° Flip			
Manual speed Pan	0.1~300°/Sec			
Manual speed Tilt	0.1~120°/Sec			
Preset speed	400°/Sec			
Ingress Protection IP66	NO	Yes	NO	Yes
Video				
Video compression	MPEG-4			
Resolution	D1, FEILD, CIF, QCIF Max 720x480 (NTSC) 720x576 (PAL)			

	Min 160x120 (NTSC) 176x144 (PAL)	
Frame rate(NTSC/PAL)	MPEG-4: Up to 30/25 fps in all resolutions	
Image settings	Configurable brightness, sharpness, white balance, exposure control, backlight compensation Overlay capabilities: time, date, text, custom logo or image	
Video streaming	Controllable frame rate and bandwidth Constant and variable bit rate	
Audio		
Audio compression	G.726 ADPCM	
Audio IN	1-ch	
Wireless		
Wireless interface	IEEE 802.11g 6 - 54 Mbps IEEE 802.11b 1 - 11 Mbps	
Wireless Range	Indoors up to 200m, Outdoors up to 400m	Outdoors up to 10km
Wireless mode	AP Router Mode Bridge mode (point-to-point / point to Multi-point)	WDS PtP and PtMP Bridge/ AP / CPE (Infrastructure and Ad Hoc) / Repeater
Wireless security	SSID Enable/Disable MAC Address Filter 64/128/152-bit WEP Encryption WPA/WPA2/WPA-PSK/WPA2-PSK (AES/TKIP) Encryption	
Network		
Security	Multiple user access levels with password protection	
System integration		
Tracking mode setting	Auto-Tracking, Time-Tracking, Alarm-Tracking , Manual-Tracking, Overstep-Tracking, Really-Tracking	
Installation, management and maintenance	Actiontop IP Camera multi-channel PC surveillance Management software tool and Actiontop IP Camera multi-channel Intelligent tracking surveillance software on CD and web-based configuration. Configuration of backup and restore Firmware upgrades over HTTP or FTP, firmware available at www.actiontop.com	

Alarm and event management	Events triggered by video motion detection, PTZ preset position external inputs or according to a schedule,			
General				
Connectors	Ethernet 10BaseT/100BaseTX, RJ-45 5 alarm inputs, 2 control outputs			
Consumption	25W	40W	25W	40W
Power	24VAC 2A 60Hz/50Hz			
Operating Temperature	0 - 50 °C	-22 ~60	0 - 50 °C	-22 ~60
Humidity	0 - 90% RH (non-condensing)			
Heater operate	No	6 on 14 off	No	6 on 14 off
Video access from Web browser	Camera live view, video recording to file (AV,AVI) Customizable HTML pages			
Minimum Web browsing requirements	Pentium III CPU 500 MHz or higher, or equivalent AMD 128 MB RAM AGP graphics card 32 MB RAM, Direct Draw, Windows XP, 2000, DirectX 9.0 or later Internet Explorer 6.x or later			
System integration support	Open API for software integration available at www.actiontop.com , including Actiontop Media Control SDK, event trigger data in video stream, PTZ control with Windows compatible Joystick			
Included accessories	Power supply: 24 V AC, 1.5 A Hard ceiling mounting bracket CD with installation tool, software, User manual, Quick installation guide			
multi-channel PC surveillance software	Camera Station - Surveillance application for viewing, recording See for more software applications via partners			
Dimensions (HxWxD) and	182()×230(H)mm	214()×260(H)mm	182()×230(H)mm	214()×260(H)mm
GW	4.25 kg (excluding hard ceiling mounting bracket)	4.55kg (excluding hard ceiling mounting bracket)	4.25 kg (excluding hard ceiling mounting bracket)	4.55kg (excluding hard ceiling mounting bracket)

