

Fire Alarm

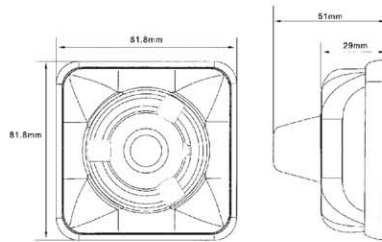
DSW Fire Alarm

FIRE ANNOUCIATOR

Model No.: EFA-82



Features:



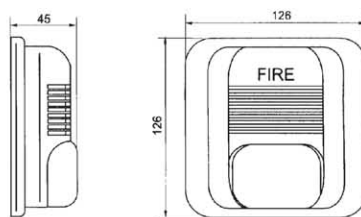
- Piezo Alarm
- High S.P.L
- Reliability & Stable

Model No.	EFA-82
Work Voltage	24VDC
Standard Current	50mA
Min. S.P.L	≥91dB
Tone Nature	Fire
Operate Voltage	15-30VDC
Operate Temperature	-10°C-50°C
Case Material	ABS(uv)

Model No.: EFA-126



Features:



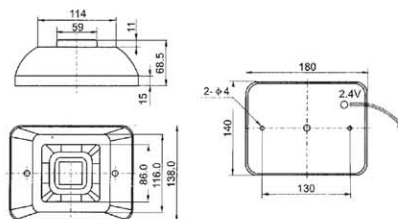
- Piezo Alarm
- High S.P.L
- Reliability & Stable

Model No.	EFA-126
Work Voltage	24VDC
Standard Current	100mA
Min. S.P.L	≥91dB
Tone Nature	Siren/Fire
Operate Voltage	15-30VDC
Operate Temperature	-10°C-50°C
Case Material	ABS(uv)

Model No.: EFA-180/F-140



Features:



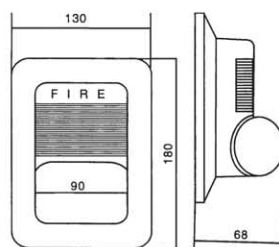
- Dynamic Alarm
- High S.P.L
- Reliability & Stable

Model No.	EFA-180/F-140
Work Voltage	24VDC
Standard Current	300mA
Min. S.P.L	≥112dB
Tone Nature	Ambulance
Operate Voltage	20-28VDC
Operate Temperature	-10°C-50°C
Case Material	ABS(uv)

Model No.: EFA-183



Features:



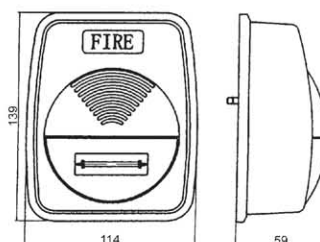
- Piezo Alarm
- High S.P.L
- Reliability & Stable

Model No.	EFA-183
Work Voltage	24VDC
Standard Current	300mA
Min. S.P.L	≥112dB
Tone Nature	3 Tone
Operate Voltage	20-28VDC
Operate Temperature	30°C-70°C
Case Material	ABS(uv)

Model No.: EPA-140



Features:



- Piezo Alarm
- High S.P.L
- Reliability & Stable

Model No.	EFA-140
Work Voltage	9-24VDC
Standard Current	150mA
Min. S.P.L	105dB
Tone Nature	Siren/Ambulance/Fire
Operate Voltage	12VDC
Operate Temperature	20°F-40°F
Case Material	ABS(uv)

DSW Security

The information contained herein is believed to be correct, but no guarantee for accuracy, completeness

Fire Alarm

DSW Fire Alarm

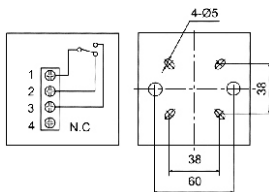
MANUAL CALL POINTS

Model No.: F-87



Features:

Break glass for Alarm without indicator light



Technical Specification:

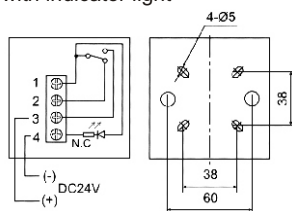
Working Voltage	DC24V/AC220V
Contact Resistant	<0.1 Ω
Max Working Current	5A
Indicator Light	<5mA(DC24V)
Working Current	
Working Temperature	-10°C~50°C
Working Relative Humidity	≤95RH%(25°C)

Model No.: F-87- I



Features:

Lift cover, Break glass for alarm with indicator light



Technical Specification:

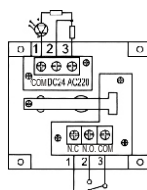
Working Voltage	DC24V/AC220V
Contact Resistant	<0.1 Ω
Max Working Current	5A
Indicator Light	<5mA(DC24V)
Working Current	
Working Temperature	-10°C~50°C
Working Relative Humidity	≤95RH%(25°C)

Model No.: F-87- II



Features:

Manual call pointer for alarm with indicator light



Technical Specification:

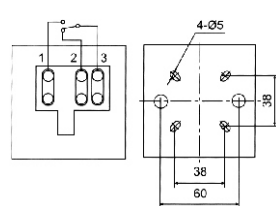
Working Voltage	DC24V/AC220V
Contact Resistant	<0.1 Ω
Max Working Current	5A
Indicator Light	<5mA(DC24V)
Working Current	
Working Temperature	-10°C~50°C
Working Relative Humidity	≤95RH%(25°C)

Model No.: F-89



Features:

Press for alarm without indicator light



Technical Specification:

Working Voltage	DC24V/AC220V
Contact Resistant	<0.1 Ω
Max Working Current	5A
Indicator Light	<5mA(DC24V)
Working Current	
Working Temperature	-10°C~50°C
Working Relative Humidity	≤95RH%(25°C)

Model No.: F-89- I



Features:

Lift cover, Press for alarm without indicator light

Technical Specification:

Working Voltage	DC24V/AC220V
Contact Resistant	<0.1 Ω
Max Working Current	5A
Indicator Light	<5mA(DC24V)
Working Current	
Working Temperature	-10°C~50°C
Working Relative Humidity	≤95RH%(25°C)

The information contained herein is believed to be correct, but no guarantee for accuracy, completeness

DSW Security

6" Fire Alarm Bell



Features

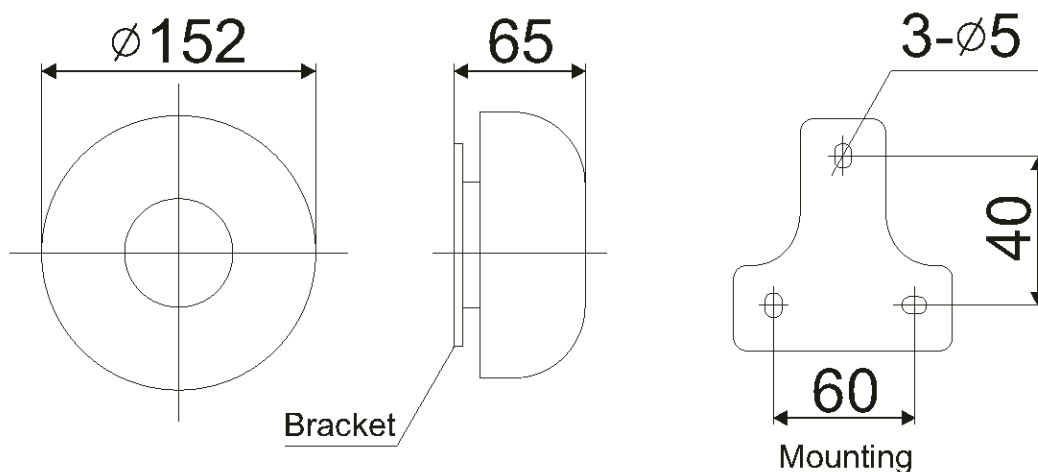
- Low current consumption
- Quickly and easily installed
- Excellent sonorous tone
- 95dBA at 1 metre
- Slim profile
- Fully suppressed and polarised
- Multi-fixing base plate

Specification

Part Number	F-150
Rated Voltage	+ 20% 24 Vdc
Rated Current	+ 20% 11 mA/20mA
Sound Output @24V	95dBA@1m
Temperature Range	-10°C to +50°C
Humidity Range	45-85%
Weight	0.95kg
Gong Colour	Red

The innovative and robust motor driven fire alarm bell offers excellent sonorous tone, high sound output and proven reliability with some models only drawing 11mA. The 150mm (6 inch) version features the revolutionary aluminium gong offering enhanced acoustics and greater sound output. Improved design means easier and quicker installation. The low profile design meets the aesthetic requirements of architects and specifiers.

Remark: 3", 4", 6", 8" Available



All rights reserved.
Any copying, whole or partly, should not be permitted without our approval.
In case of technological improvement, this version shall be modified accordingly.