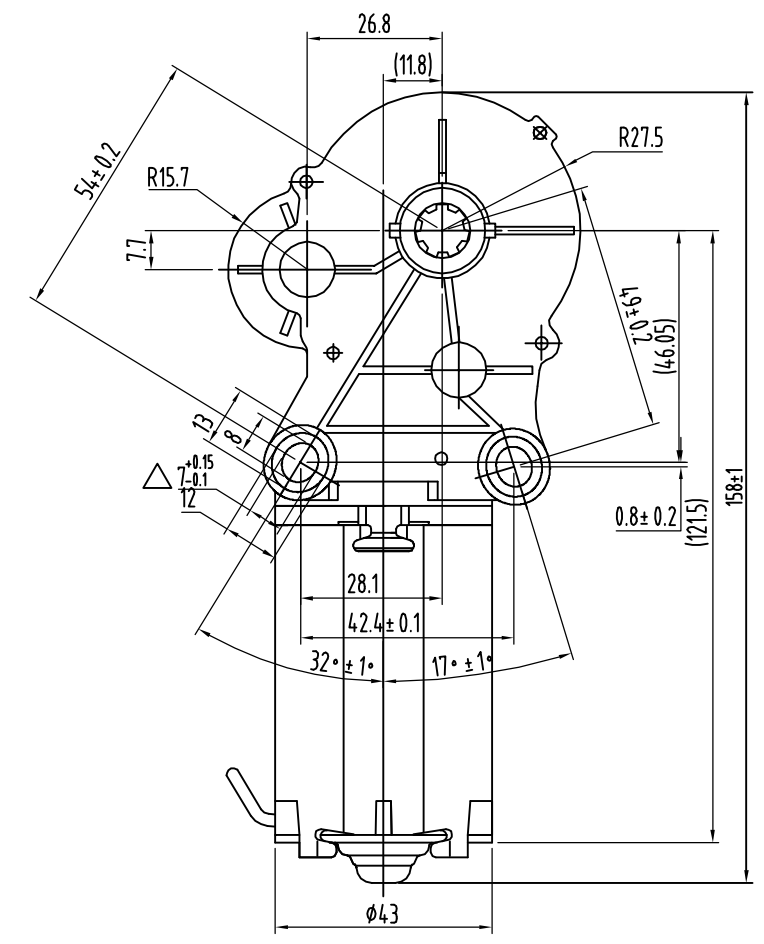
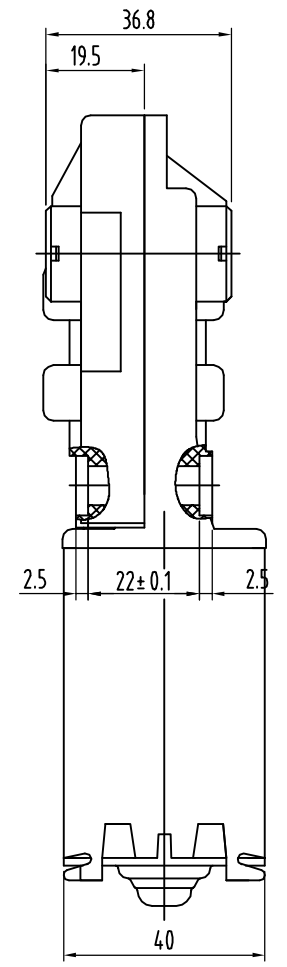
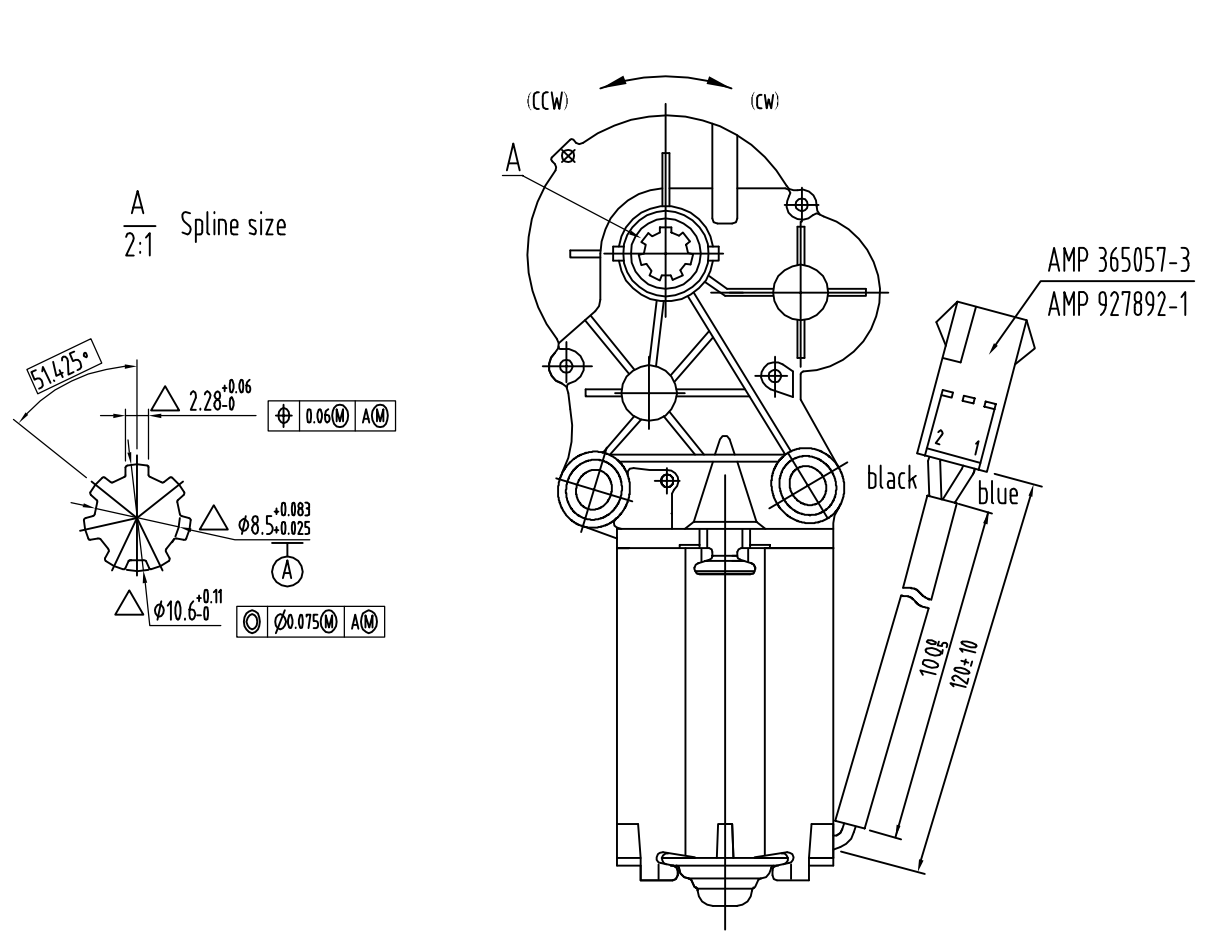
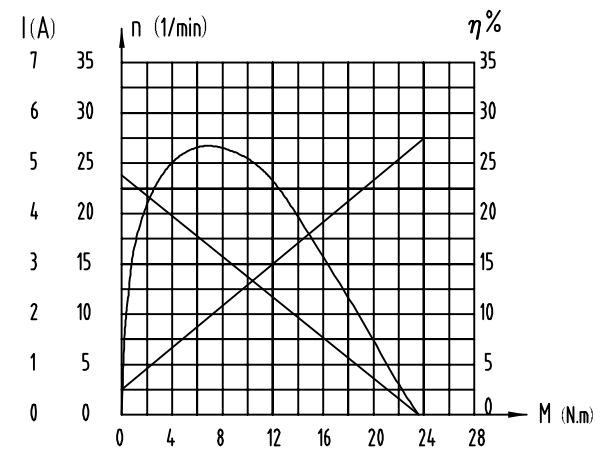


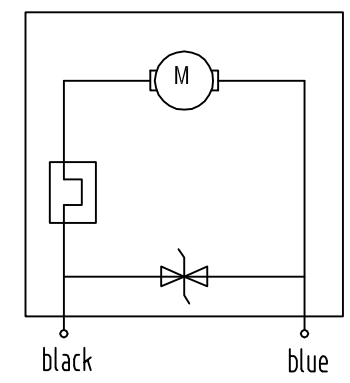
| 版本号 VERSION | 修改号 NO. | 修改说明 REVISION DESCRIPTION | 日期 DATE | 修改 REVISED BY | 审核 CHECKED BY |
|----------------|------------|------------------------------|------------|------------------|------------------|
| | 1 | | | | |
| | 2 | | | | |
| | 3 | | | | |



Performance Curve



Electrocircuit principle



Technical requirement

- rated voltage: 24V DC
- Motor performance:
un-load speed: 20~26 r/min
un-load current: <0.6A
stall current: <6A
Stall torque: 18~24N.m
- shift: CW/CCW
- No apparent vibration and noise; the noise is less than 45dB away from 0.5m with loading 1N.M.
- Great appearance; no apparent rift on the surface of motor.

| | | | | | |
|------------------|--|---|--|--------------------------------|-------------------------|
| ◇ | 特殊特性尺寸, 要求CPK CHARACTERISTIC DIMENSION, REQUIRE PROCESS CAPABILITY CPK | DSW NINGBO DSW INTERNATIONAL .LTD | 制图: DRAWN BY: | 设计: DESIGNED BY: | 批准: APPROVED BY: |
| △ | 重要尺寸 IMPORTANT DIMENSION | | 校对: COLLATED BY: | 审核: CHECKED BY: | 批准日期: APPROVAL DATE: |
| 无符号 NO SYMBOL | 一般尺寸 GENERAL DIMENSION | | 图纸名称: DRAWING NAME: | 比例 版本 幅面 SCALE VERSION SIZE | |
| ○ | 仅针对模具制作控制, 不要求作为 来料检测项目 JUST FOR CONTROL OF TOOLING, NO REQUIREMENT FOR ACCEPTANT CHECK | | 图纸编号 DRAWING NUMBER | DSW0904 | |
| | | | 未注公差 DEFAULT TOLERANCE | | |
| | | | X ±0.25 X.X ±0.10 X.XX ±0.05 X* ±1* | | |

参考零件 / 版本:
REFERENCE / VERSION: